

88 5012 941

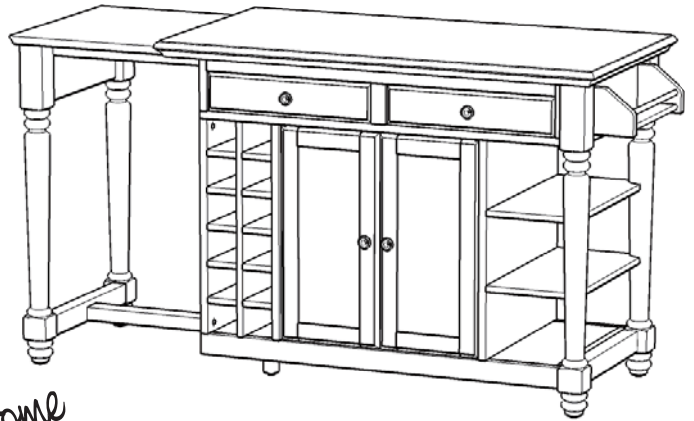
Grand Torino Kitchen Island

IMPORTANT NOTE

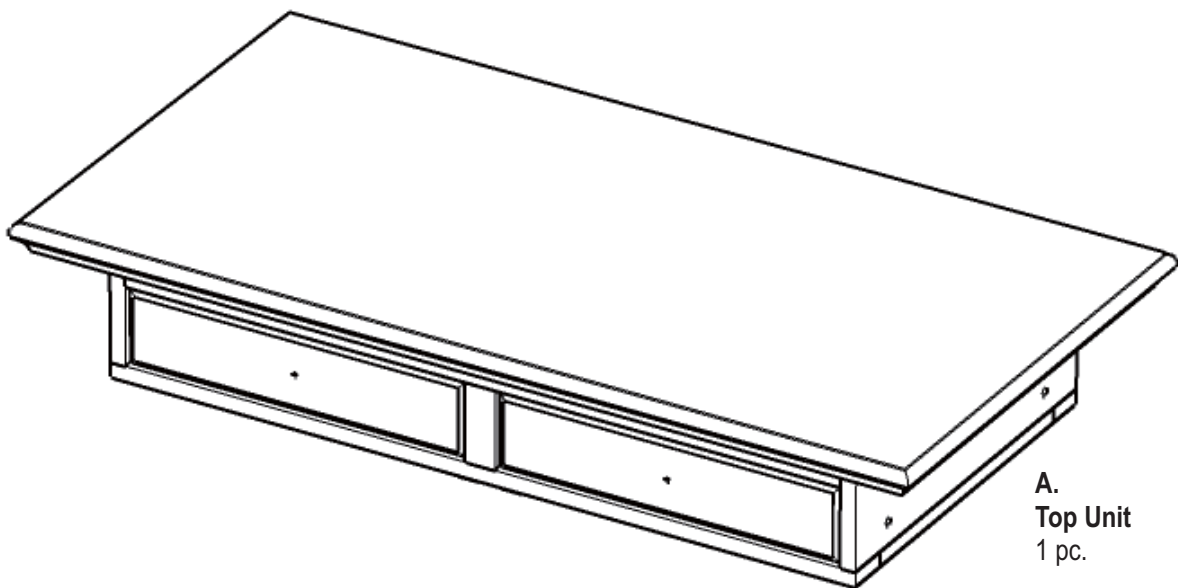
Carefully remove all the parts from the carton and put them individually on a soft cloth to prevent scratches or other damages occurring to the wood parts.

We have taken great care in the design of this product and request that you carefully and strictly follow our assembly instructions to ensure a completed product as it was designed.

Home
Styles



Part List



A.
Top Unit
1 pc.

For assembly see instructions in carton 88 5012 942

Tools required for assembly : **Phillips** screwdriver

Tools recommended for assembly : Level

Home Styles Consumer Assistance: www.homestyles-furniture.com,
servicedesk@homestyles-furniture.com, 888-680-7460, 877-831-0319

88 5012 942

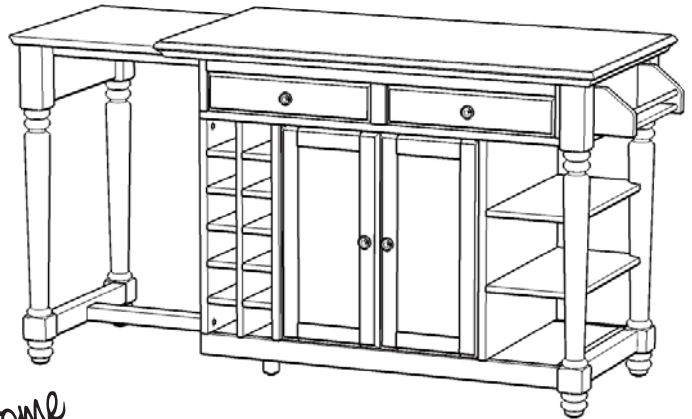
Grand Torino Kitchen Island

IMPORTANT NOTE

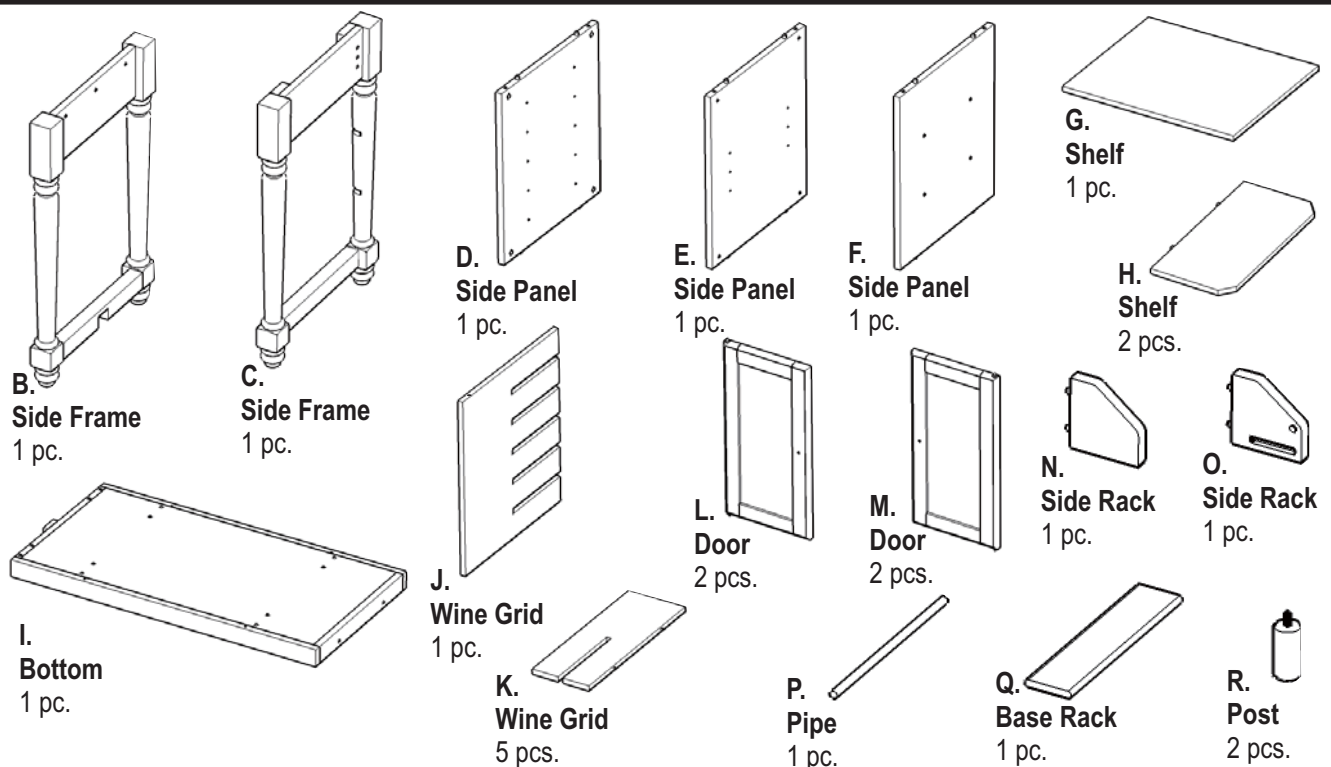
Carefully remove all the parts from the carton and put them individually on a soft cloth to prevent scratches or other damages occurring to the wood parts.

We have taken great care in the design of this product and request that you carefully and strictly follow our assembly instructions to ensure a completed product as it was designed.

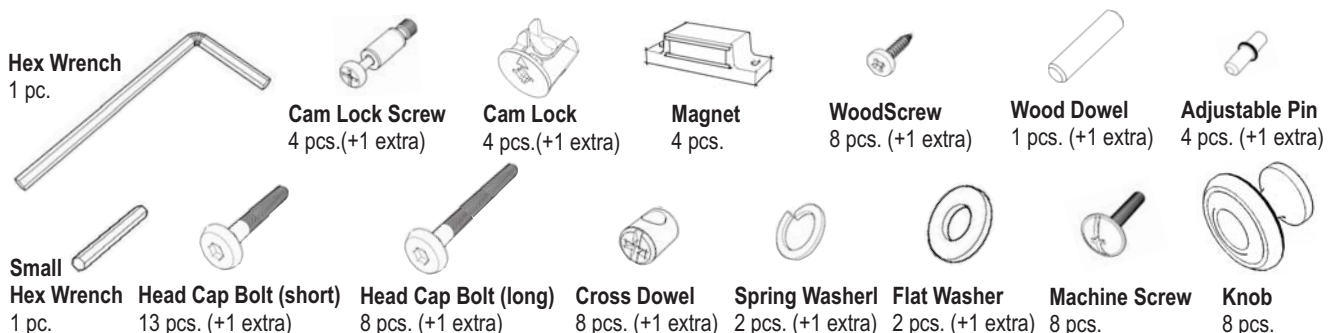
Home
Styles



Part List



Hardware List



Also need Part in carton 88 5012 941

Tools required for assembly : **Phillips** screwdriver

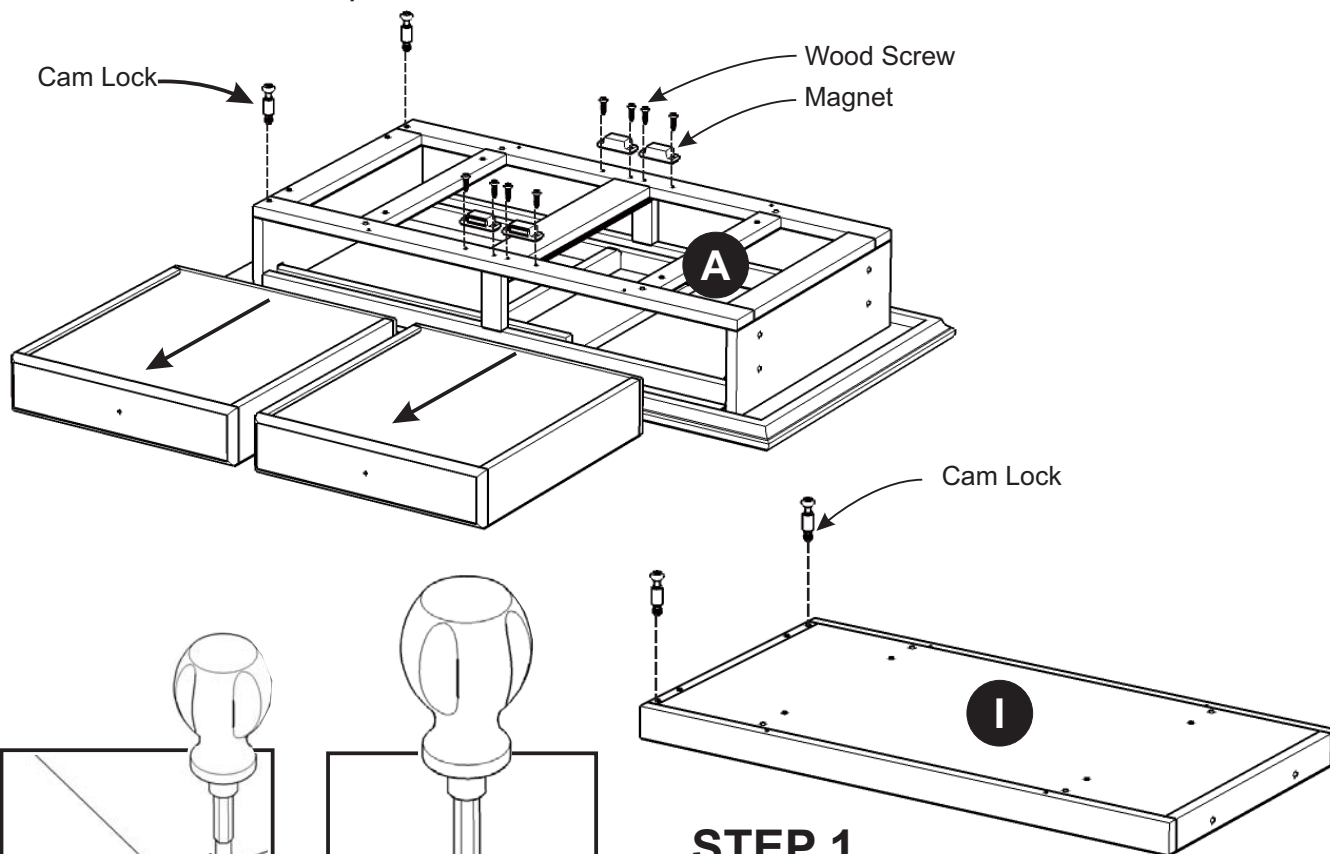
Tools recommended for assembly : Level

Home Styles Consumer Assistance: www.homestyles-furniture.com,
servicedesk@homestyles-furniture.com, 888-680-7460, 877-831-0319

Assembly Instructions 2/5

IMPORTANT

- * Do not tighten up all the screws until each part is properly assembled.
- * You should keep Hex Wrench in a safe place as you may need to tighten up the Head Cap Bolts in the future.
- * After assembly, item must be level to work properly. Use the included adjustable levelers to level.
- * Use a soft cloth between these parts and the floor.



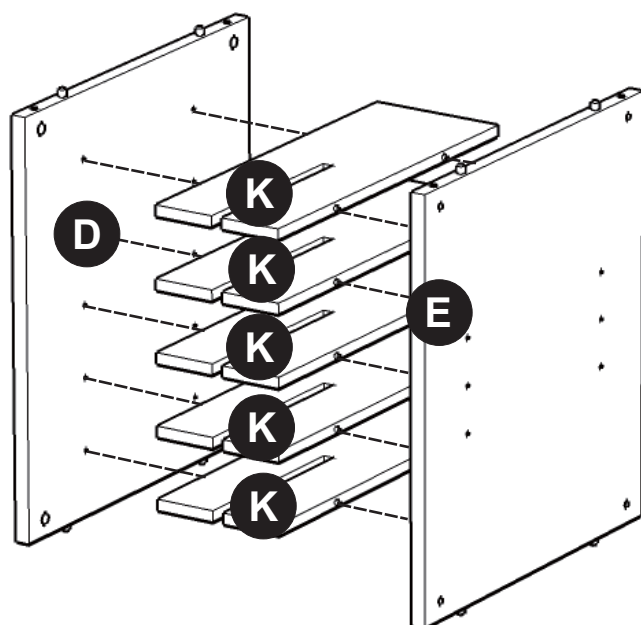
STEP 1

Place Top Unit (A) upside down on a soft cloth.

Remove the drawers in Top Unit (A).

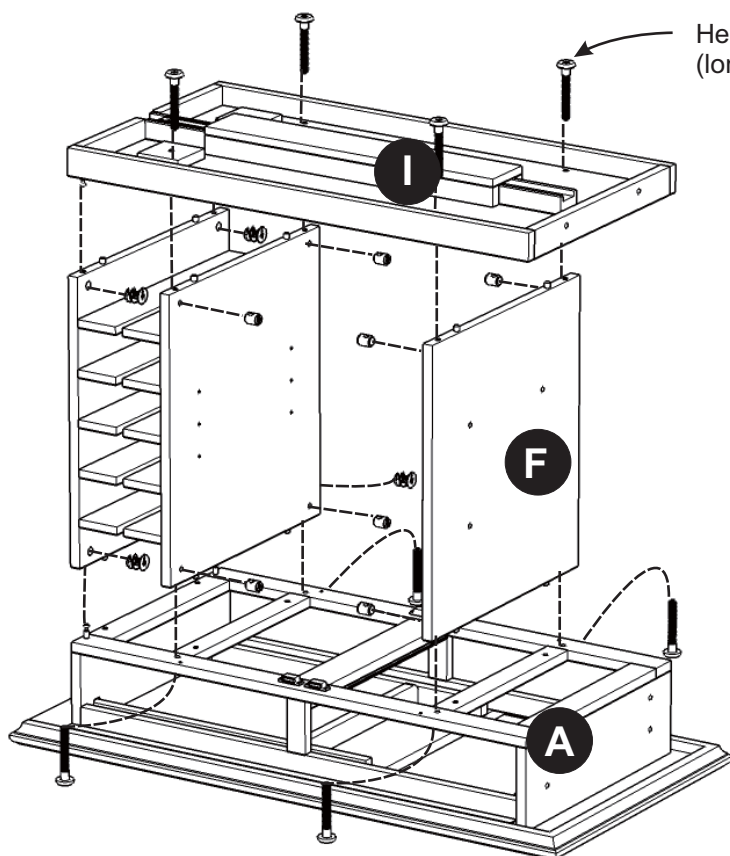
Attach Magnets to Top unit (A) using Wood Screws. (see Figure 1)

Insert Cam Lock Screws into the pre-drilled holes of Top Unit (A) and Bottom (I). (see Figure 2)



STEP 2

Attach Wine Grid (K) to Side Panel (D) and (E).



STEP 3

Attach unit from Step 2 to Top Unit (A) using Cam Locks, Head Cap Bolts (long) and Cross Dowels. (see Figure 3), (see Figure 4)

Attach Side Panel (F) to unit with Head Cap Bolts (long) and Cross Dowels.

Attach Bottom (I) to the unit using Cam Locks, Head Cap Bolts (long) and Cross Dowels.

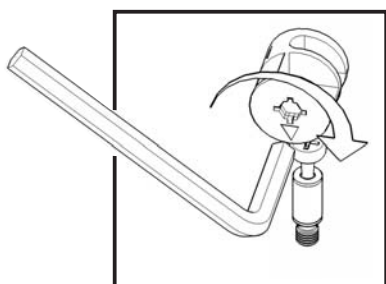


Figure 3

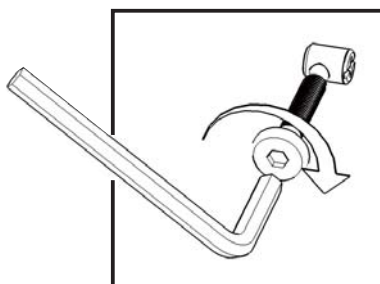


Figure 4

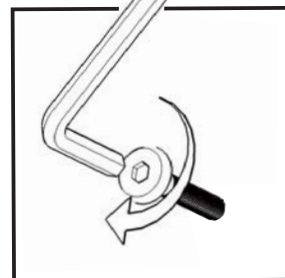
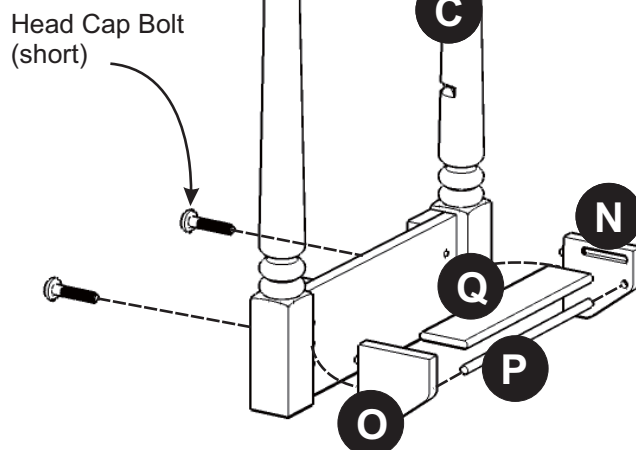


Figure 5

STEP 4

Attach Base Rack (Q) and Pipe (P) to Side Rack (N) and (O).

Attach rack unit to Side Frame (C) with Head Cap Bolts (short). (see Figure 5)



STEP 5

Attach Shelves (H) to unit.

Attach unit from Step 4 to unit with Head Cap Bolts (short).

Attach Posts (R) to unit.

Slide out sub-top and wood runner from unit.

Attach Side Frame (B) to the unit with Flat Washers, Spring Washers and Head Cap Bolts (short). (see Figure 6)

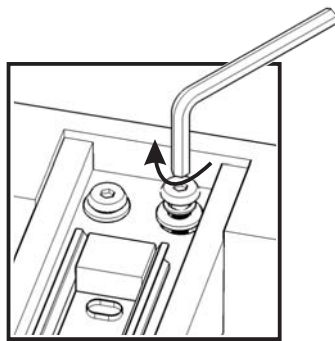
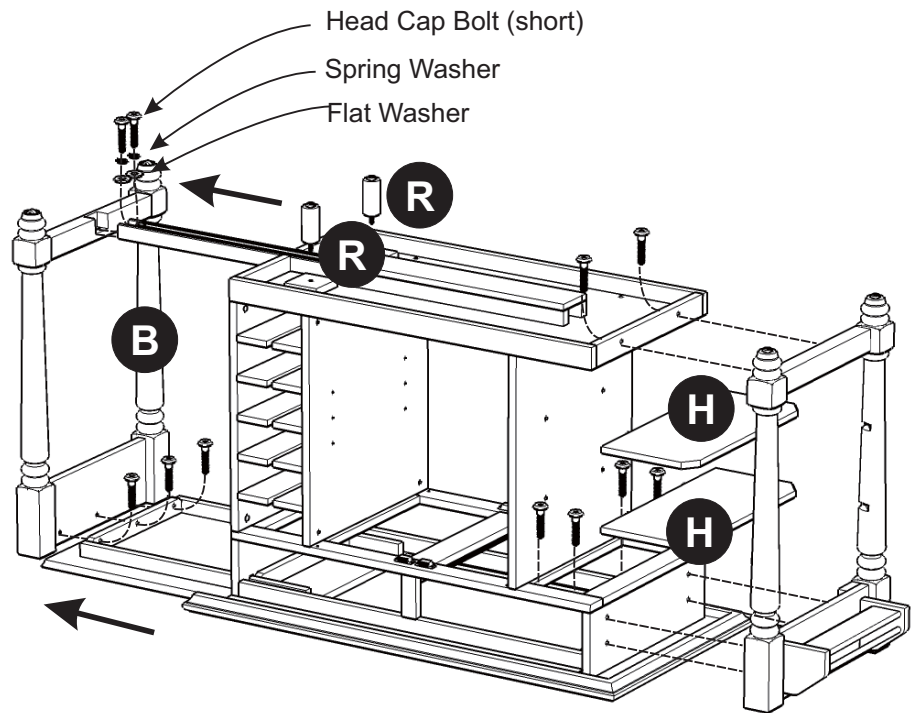


Figure 6

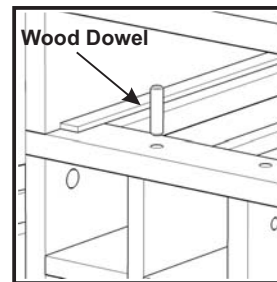
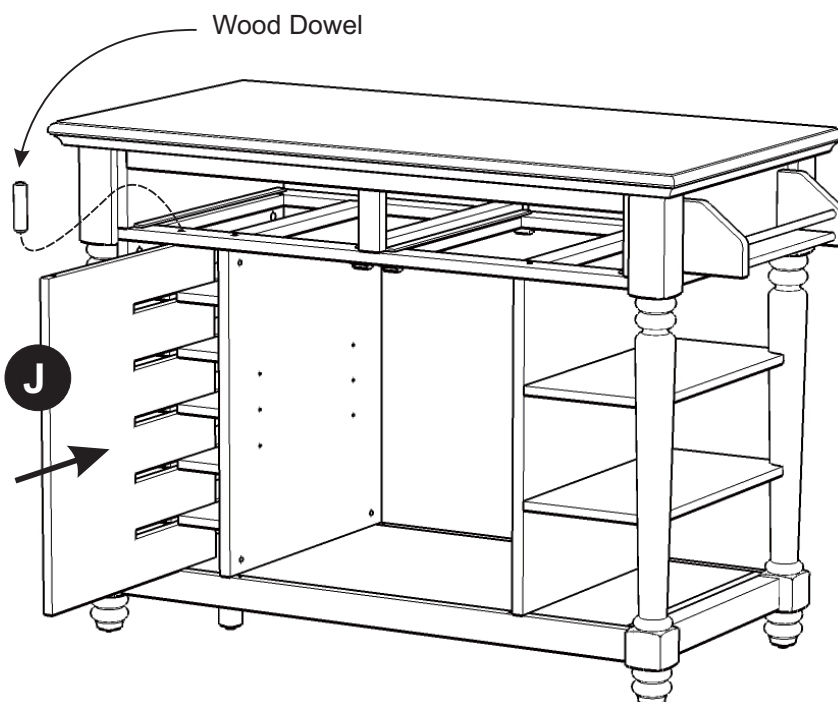


Figure 7



STEP 6

Turn the unit to its' upright position.

Slide Wine Grid (J) into unit and lock it in position by inserting Wood Dowel into the hole located in the rail directly above it. (see Figure 7)

STEP 7

Assemble Pull Handles to drawers and Doors (L), (M) with Machine Screws. (see Figure 8)

Slide Drawers into position.

Attach Doors (L) and (M) by inserting the lower spring pin into the hole until it clicks and then do the same for the upper spring pin. (see Figure 9)

Insert Adjustable Pins into side panels at the desired level. Place Shelf (G) into position.

To level the unit, adjust the adjustable levelers on the stationary frame legs and the posts. (see Figure 10)

Note : Unit must be level to work properly

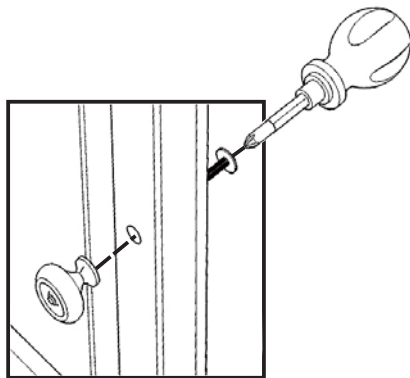
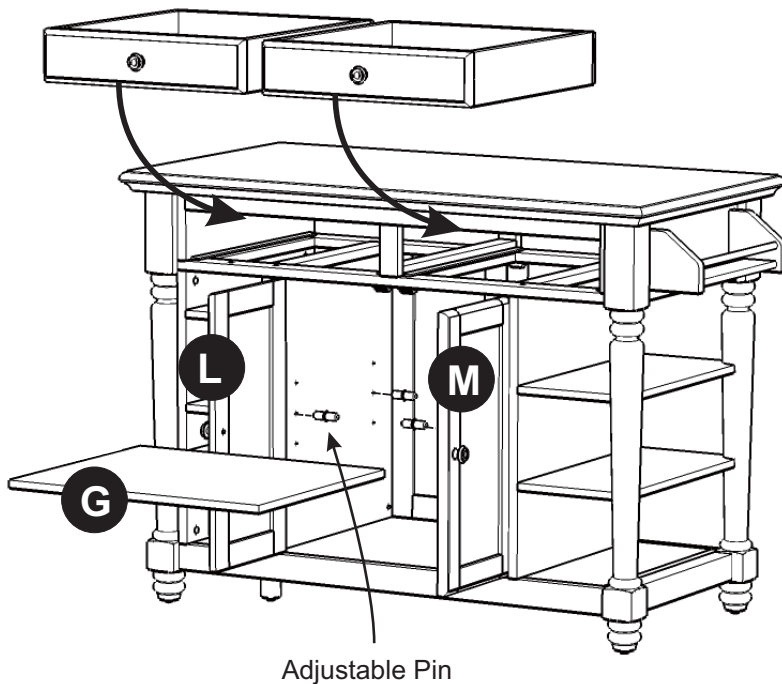


Figure 8

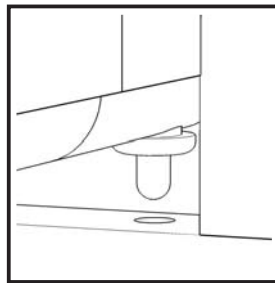


Figure 9

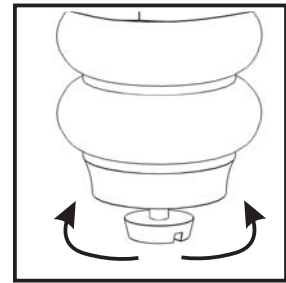


Figure 10

STEP 8

To use top extension, pull out side frame from the unit.

